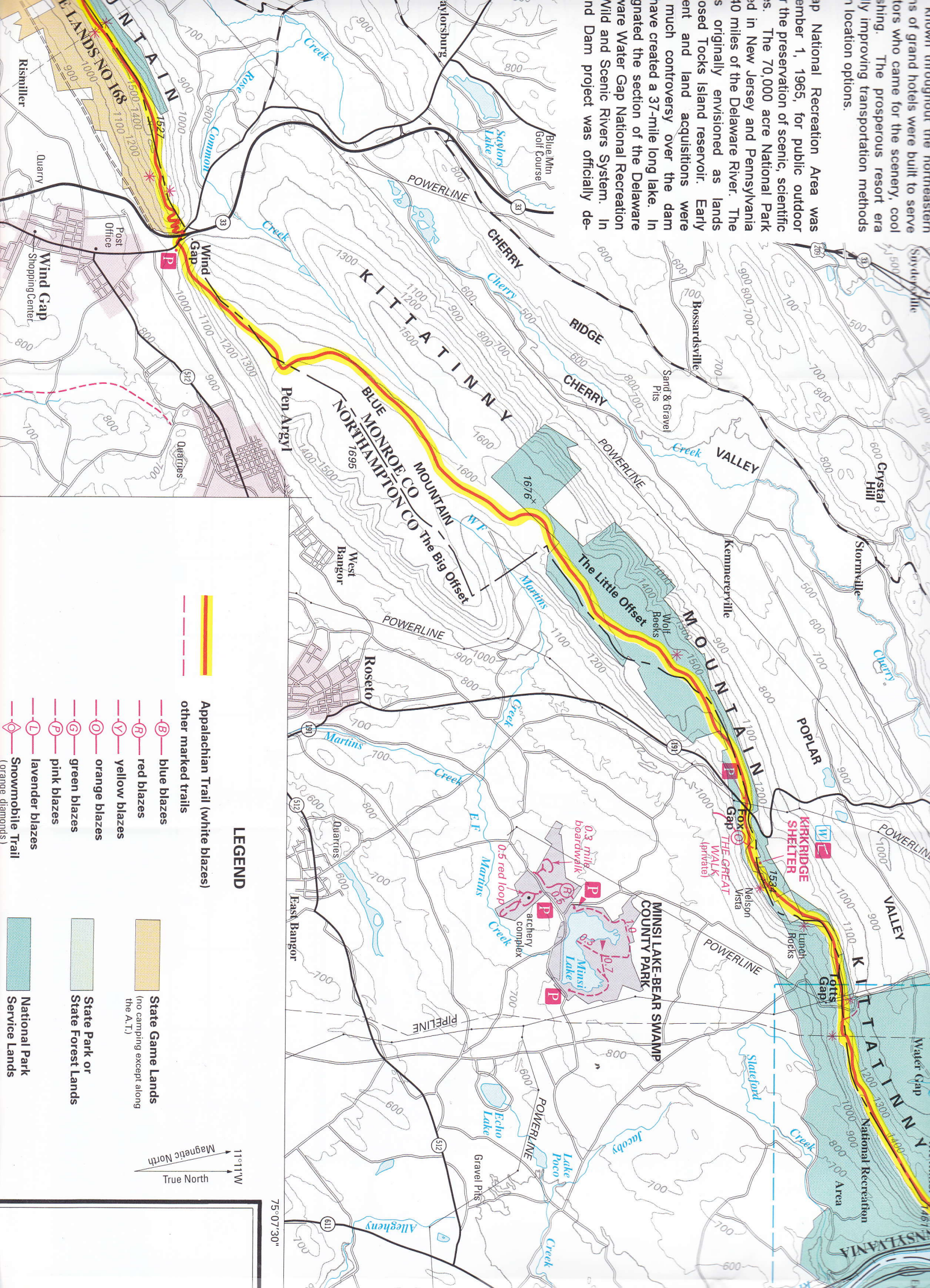


Known throughout the northeastern United States, the scenic beauty of the Delaware River has long attracted visitors who came for the scenery, cool breezes, and fishing. The prosperous resort era of the late 19th and early 20th centuries brought many improvements, including improving transportation methods and creating recreational facilities.

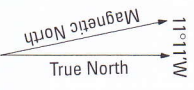
The National Recreation Area was established on September 1, 1965, for public outdoor recreation and the preservation of scenic, scientific, and historic resources. The 70,000 acre National Park is located in New Jersey and Pennsylvania, extending for 40 miles of the Delaware River. The area was originally envisioned as lands for the preservation of Tocks Island reservoir. Early on, the area and land acquisitions were made, but much controversy over the dam project have created a 37-mile long lake. In 1965, the section of the Delaware River was designated the section of the Delaware Water Gap National Recreation Area. The Wild and Scenic Rivers System. In 1965, the dam project was officially de-



- Appalachian Trail (white blazes)
- other marked trails

- blue blazes
- red blazes
- yellow blazes
- orange blazes
- green blazes
- pink blazes
- lavender blazes
- Snowmobile Trail (orange diamonds)

- State Game Lands (no camping except along the A.T.)
- State Forest or State Park Lands
- National Park Service Lands



75°07'30"